

A Member of



A Project by:

SIYARAM DEVELOPERS

Site Address: Beside Mimalaya Kanya Abasan
21/2 Mile Checkpost, Sevoke Road, Siliguri 734001
P +91 96791 97777, 99333 38749, 98008 62711
E mailus@cpgroup.co.in, W www.cpgroup.co.in

Marketed by:



Where Planets

revolve around the fun



The atmosphere of limitless fun
The atmosphere of limitless fun
The atmosphere of limitless fun
The atmosphere of limitless fun
The atmosphere of limitless fun
The atmosphere of limitless fun
The atmosphere of limitless fun
The atmosphere of limitless fun
The atmosphere of limitless fun
The atmosphere of limitless fun
The atmosphere of limitless fun



The Universe is built with an atmosphere of limitless fun in every room, all facilities, each sq. ft... for you and your family. 236 apartments across 10 blocks on Eastern Bypass Road, Siliguri.



The Universe stops in the happy - center of Siliguri



Located on Eastern Bypass Road, makes the Universe at the happy distance from your needed destinations-schools, colleges, offices, malls, hospitals etc. Your kids will never be late to schools. You can also reach office early without being weary from the journey. Coming back earlier to home and hanging out in the nearby mall with your family is always a source of satisfaction. Hospitals at stone throwing distance can take care of your emergency needs. Enjoy all the needs & funs at your proximity.

DISTANCE FROM THE UNIVERSE

› DON BOSCO SCHOOL	1.7 KM
› NIRMALA CONVENT SCHOOL	1.2 KM
› AUXILLIUM SCHOOL	2.1 KM
› ST. MICHALES SCHOOL	2.2 KM
› ANANDALOE HOSPITAL	3 KM
› BHAKTINAGAR POLICE STATION	0.6 KM
› PC MITTAL BUS STAND	1.6 KM
› NJP RAILWAY STATION	9.3 KM
› BAGDOGRA AIRPORT	17.1 KM
› ORBIT MALL (INOX)	0.8 KM
› COSMOS MALL	2 KM
› HOTEL ROYAL SAROVAR	0.85 KM
› SHREE SHYAM MANDIR	1.5 KM





the galaxy turns green



Hear the songs of your joyous heart during the excursions into the gardens- in the twittering of birds, colourfulness of the butterflies, cascades of the fountains, the ripples in the waters, and the sweet breathing of flowers. Sail in the ocean of everlasting fun when lashes of refreshing waves turns green with the extravagance of nature with splashes of glittering smiles of your family.

- › Landscaped gardens
- › Children's play area
- › Fountains
- › Adda zone





our 'atmosphere' is made up of all comforts



The fun of opulent living comes from the ambience & diversity of comforts. Every member of a family will experience harmonious living with their matching friends only in our club atmosphere. You have opportunity even to enroll for Swimming pool, SPA, Playzones, cafeteria, multigymn, mediation room, library..... to meet the different tastes of your leisure. Your universe will never be cocooned with the boredom of monotony. Every day will have a different source of joy and reverberate with the sounds of laughter and merriment.

Swimming Pool ➤ **SPA** ➤ **Yoga & Meditation Room** ➤ **Multigymn**
➤ **Cafeteria Library** ➤ **AC Badminton Court** ➤ **Table Tennis Room**
➤ **Pool Room** ➤ **AC Community hall** ➤ **Departmental stores** ➤ **Creche**
➤ **Guest House** ➤ **Home Theatre**

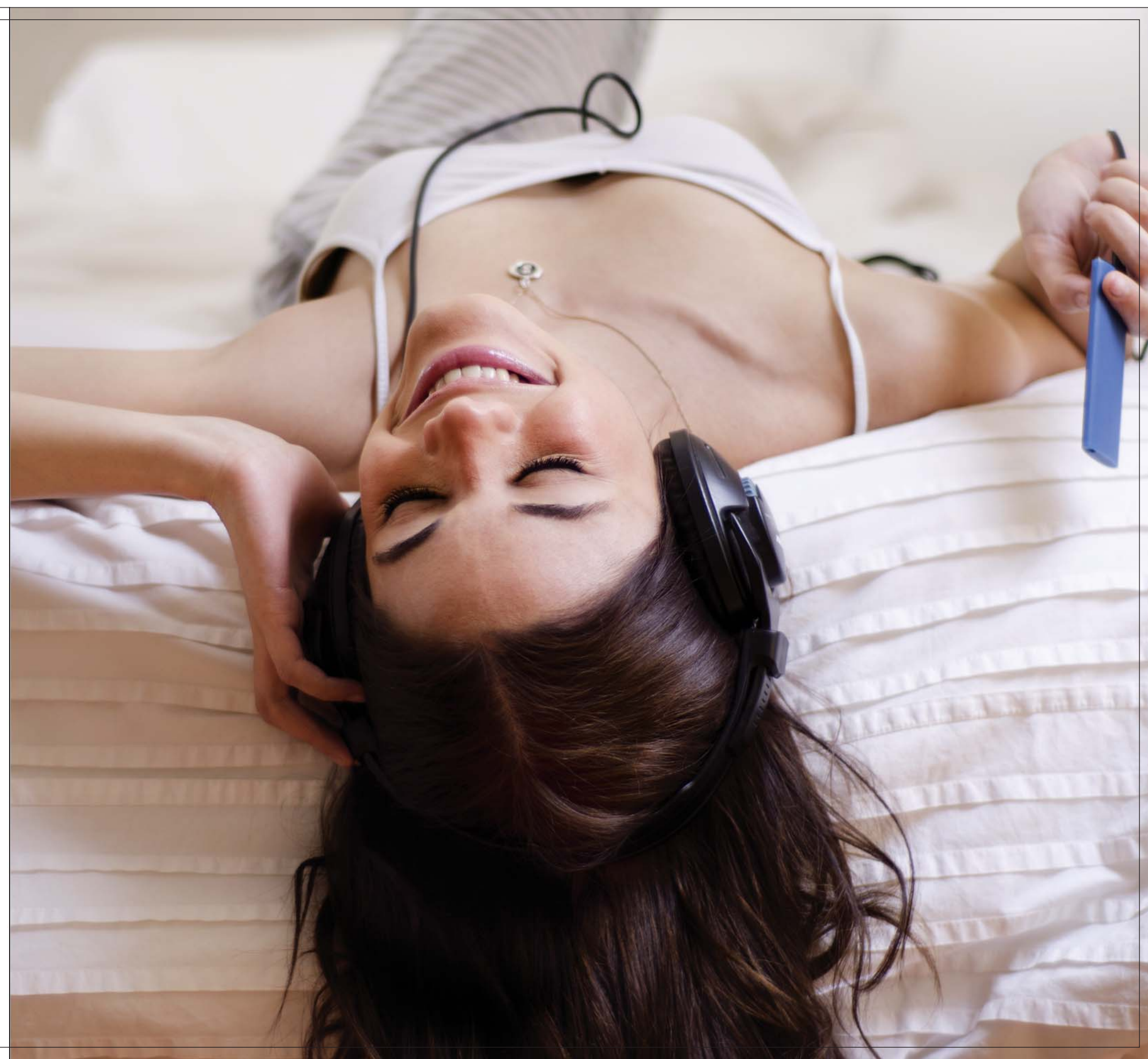




spectra of delights served by the asteroids

The enjoyment of life doubles when it is not dotted with disruptions. Sense of security brings essence of peace. 24 x 7 power back up and incessant surveillance of the CC cameras will present you absolutely disruption free secured living. Enjoy incessant fun packed life with your dearest ones in your desired universe.

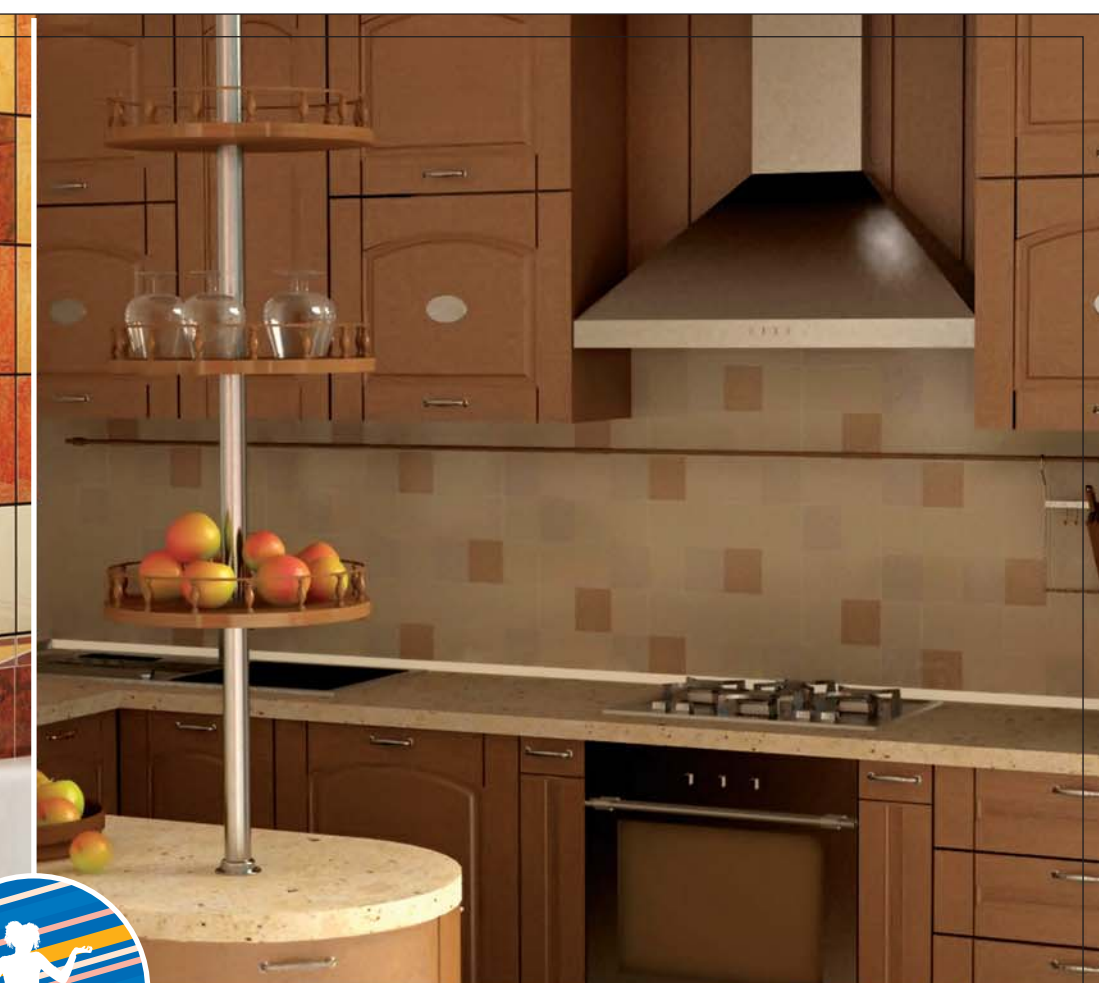
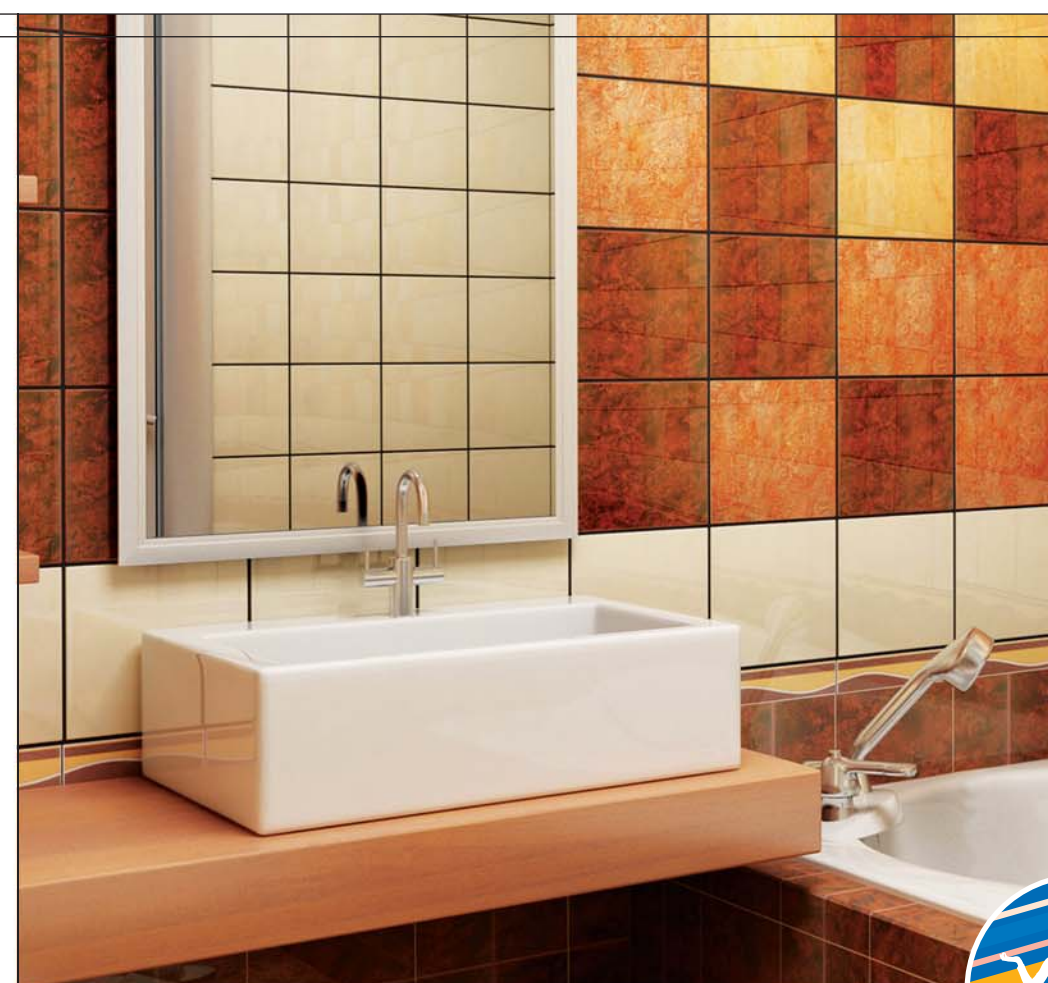
- › **CC TV at Main Gate**
- › **24 Hours Power backup**
- › **Intercom Connectivity**
- › **Security Surveliance**





Meteoric features all around

- **Wall :** 125 mm (5") thick, plastered from either side.
- **Door frames :** Wooden door frames 6"-2"
- **Door shutters :** 30 mm laminated flush door for main gate & 30 mm one side laminated flush door for all inside doors.
- **Windows :** Alluminium
- **Door fittings :** Alluminium (samphane colour)
- **Flooring :** Vitrified Tiles Flooring.
- **Tiles :** Ceramic tiles in the bathroom upto the height of dado level and upto 4' above kitchen counter.
- **Kitchen counter :** Granite top and steel sink in normal size kitchen counter.
- **Electrification :** Concealed type branded copper wiring with modular switches.
- **Toilet :** Water closet PVC cistern, one wash basin both white in colour, two water taps, pillar cock for basin and overhead shower.
- **Wall finish :** Lime - Pani finish with one coat cement primer
- **Bathroom :** CP fitting of JAQUAR or equivalent brand.
- **Packages :** Internal Up gradation available on request at extra cost.





The Universe is created by the positive bang of the stars

The Universe is created by source of indomitable energy. C P Group the creators of this “dream come true” project is the most enterprising name in the firmament of Siliguri’s real estate for more than a decade. Their tireless endeavour is to bring the splendour of world class living in the heart of Siliguri. Suryojyoti Complex, Hill View Residency, Vasant Kunj and Suryadeep Apartments are fetching them huge accolades from all corners.

The happy smiles of the fun-filled lives have been the source of inspiration of C P group to come with up projects of global standard like “The Universe”, exceeding customer satisfaction.



Suryajyoti Complex



Vasant Kunj



Hill View Residency



Suryadeep Apartment

▲ past projects

on going projects ▼

Skyview Plaza



Indigo Residency



Skyview Residency



MILESTONE





Bird's eye view



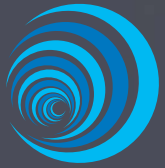
Children's play area



Swimming pool



Landscape view



Day view



Night view



Site Plan

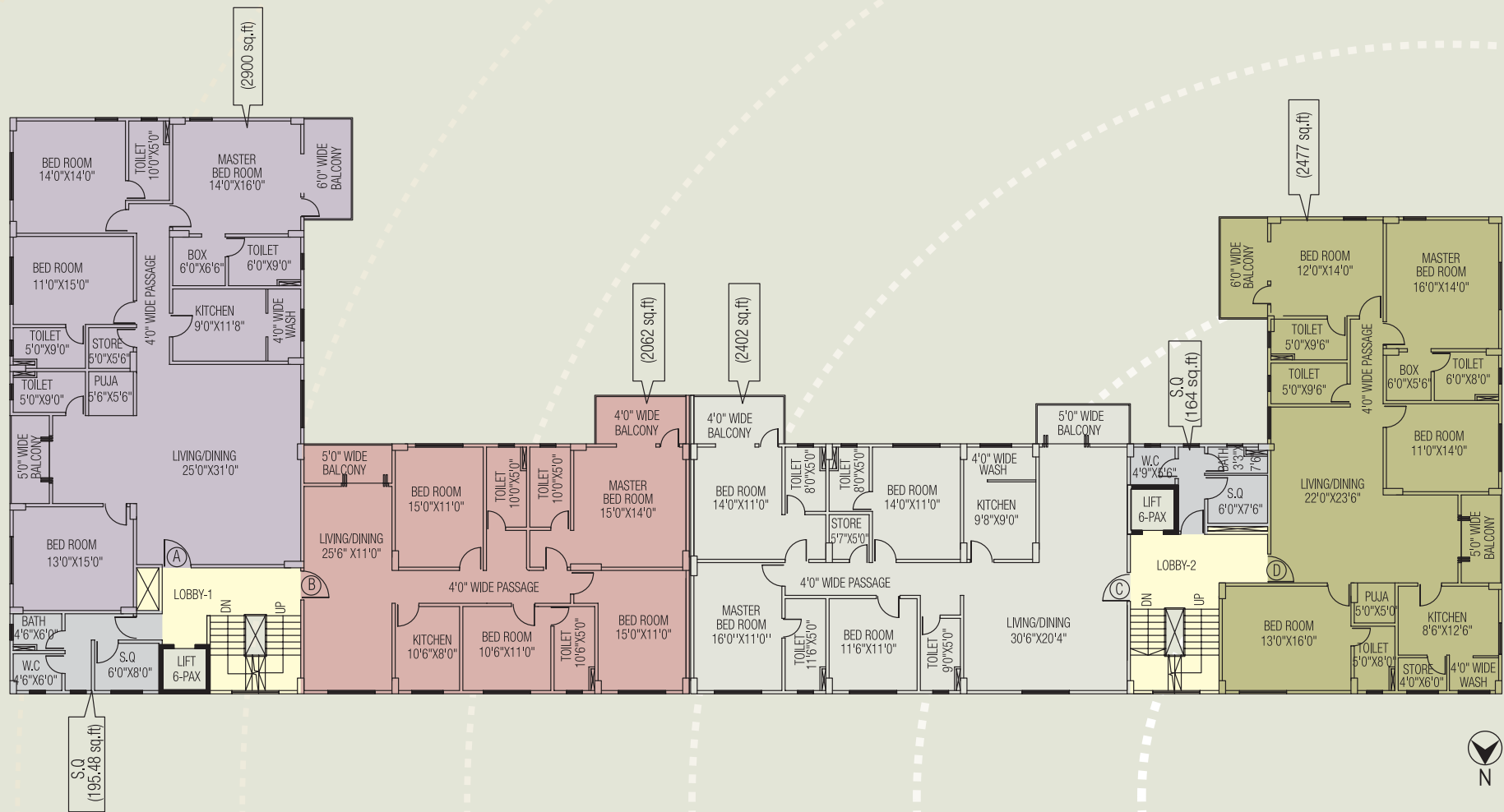




Block 1 - MERCURY

Floor Plan

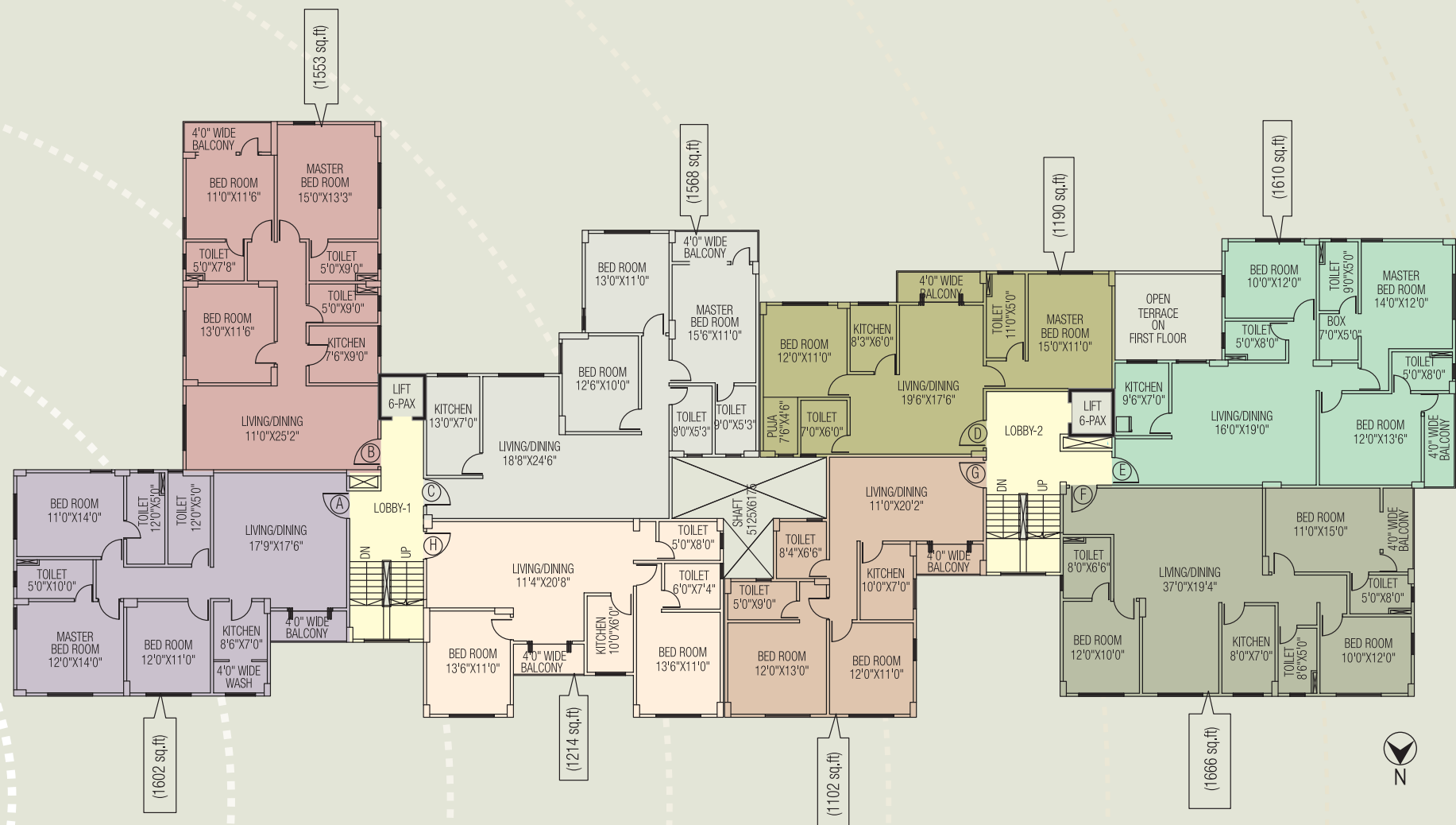
TYPE	FLAT
4 BHK	A, B, C & D



Block 2 - VENUS

Floor Plan

TYPE	FLAT
3 BHK	A, B, C, E & F
2 BHK	D, G & H





Block 3 - EARTH

Floor Plan

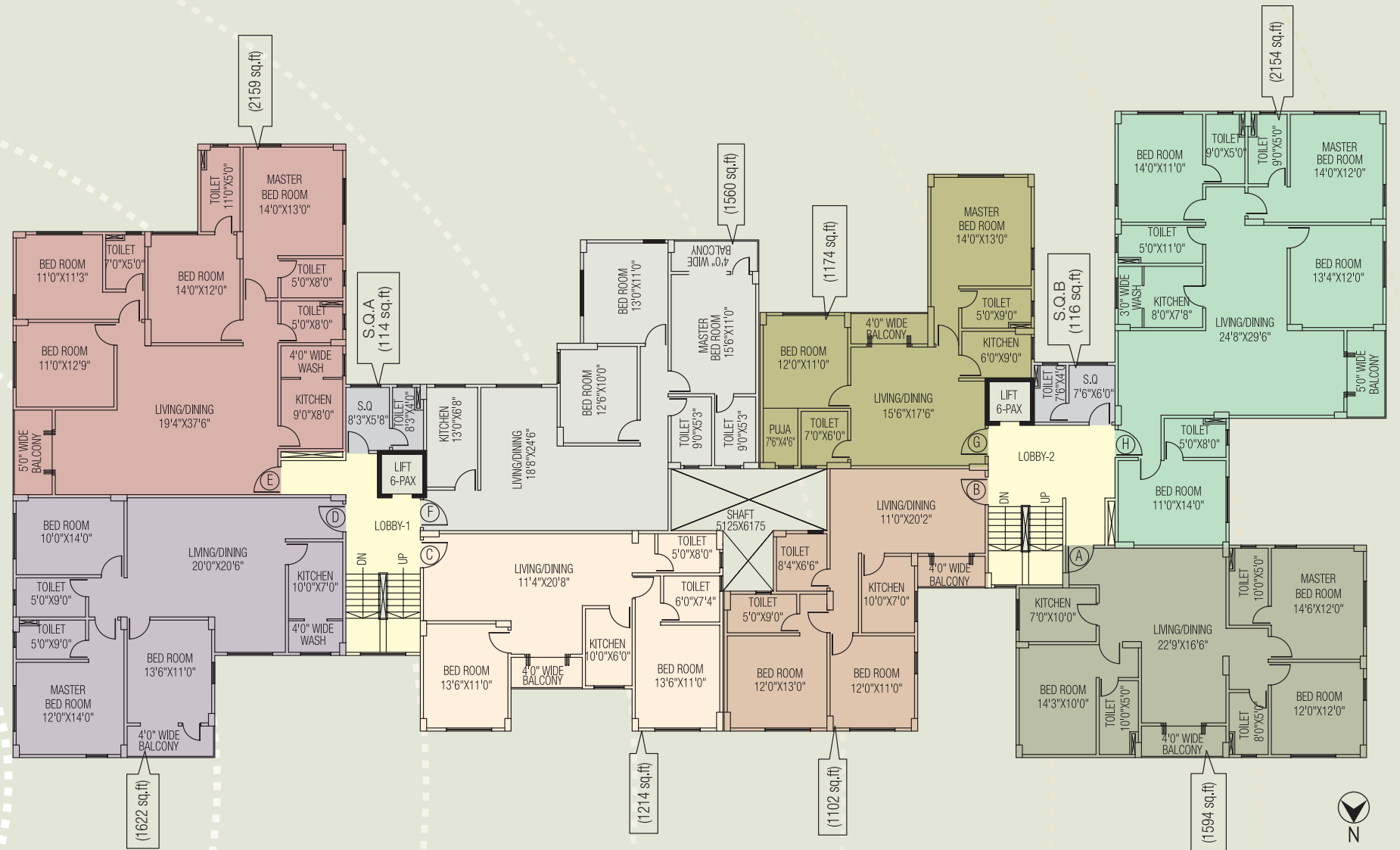
TYPE	FLAT
4 BHK	E
3 BHK	A, B & C
2 BHK	D, F & G



Block 4 - MARS

Floor Plan

TYPE	FLAT
4 BHK	E & H
3 BHK	A, D & F
2 BHK	B, C & G

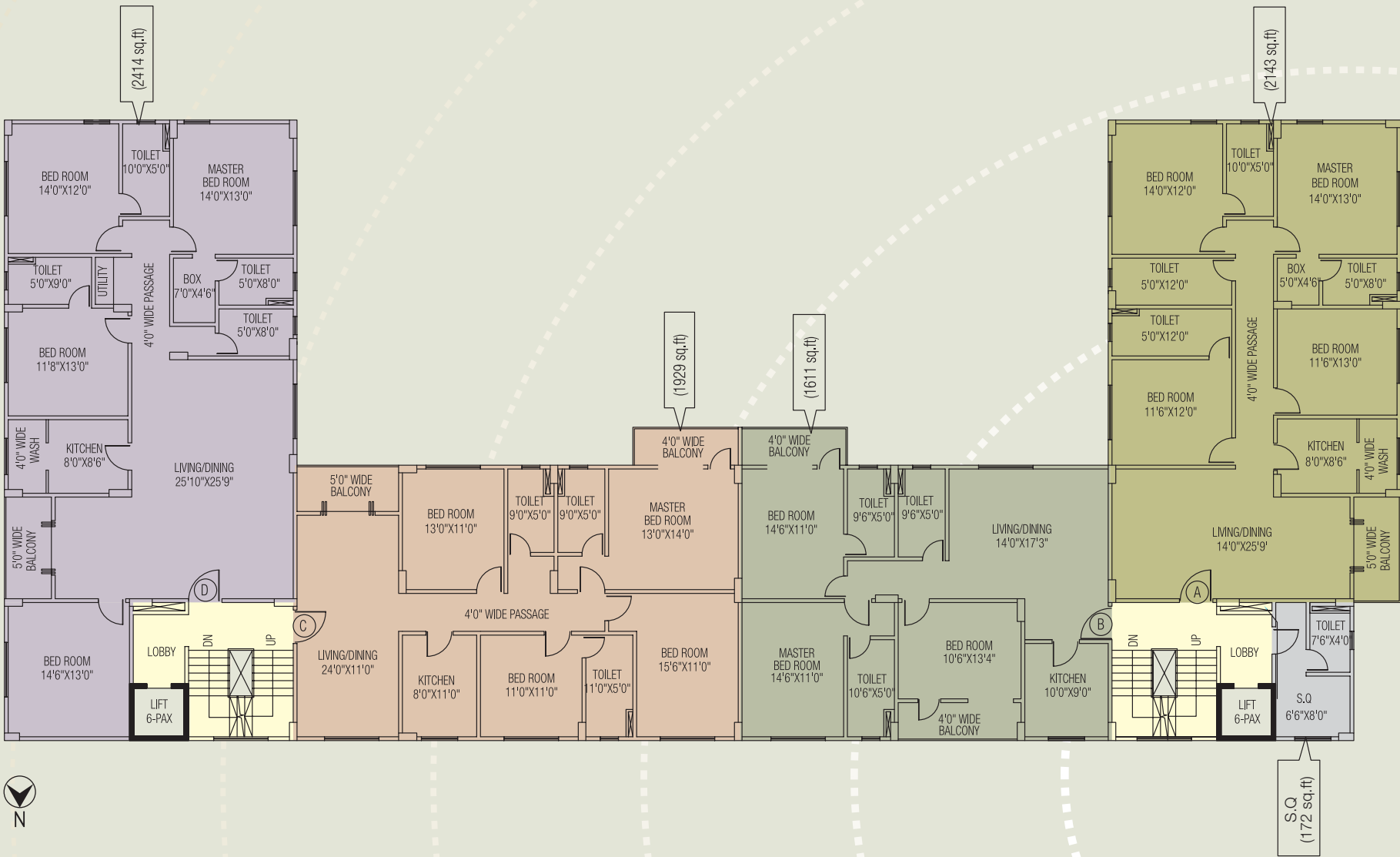




Block 5 - JUPITER

Floor Plan

TYPE	FLAT
4 BHK	A, C & D
3 BHK	B



Block 6 - SATURN

Floor Plan

TYPE	FLAT
4 BHK	C
3 BHK	A & B

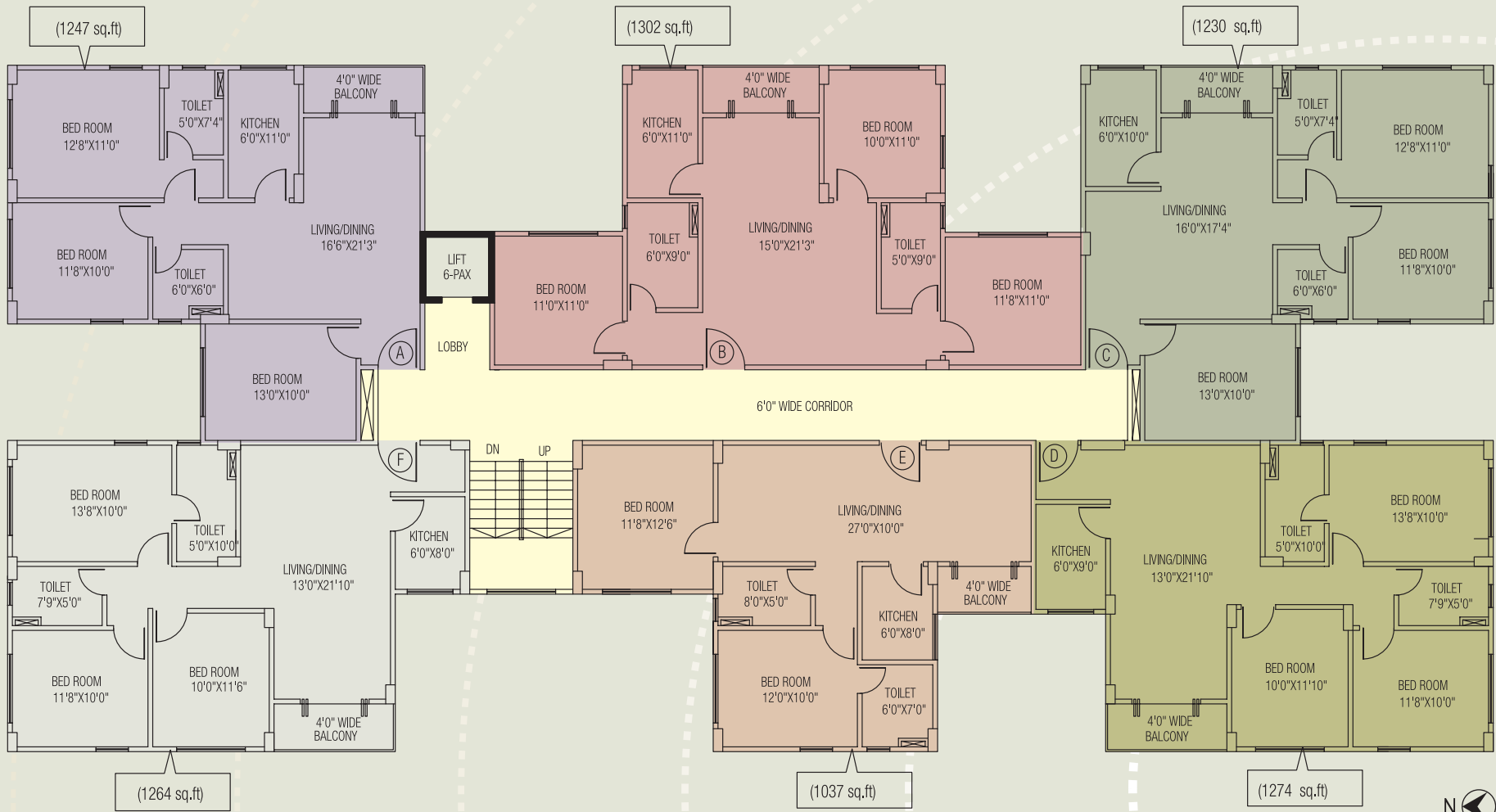




Block 7 - URANUS

Floor Plan

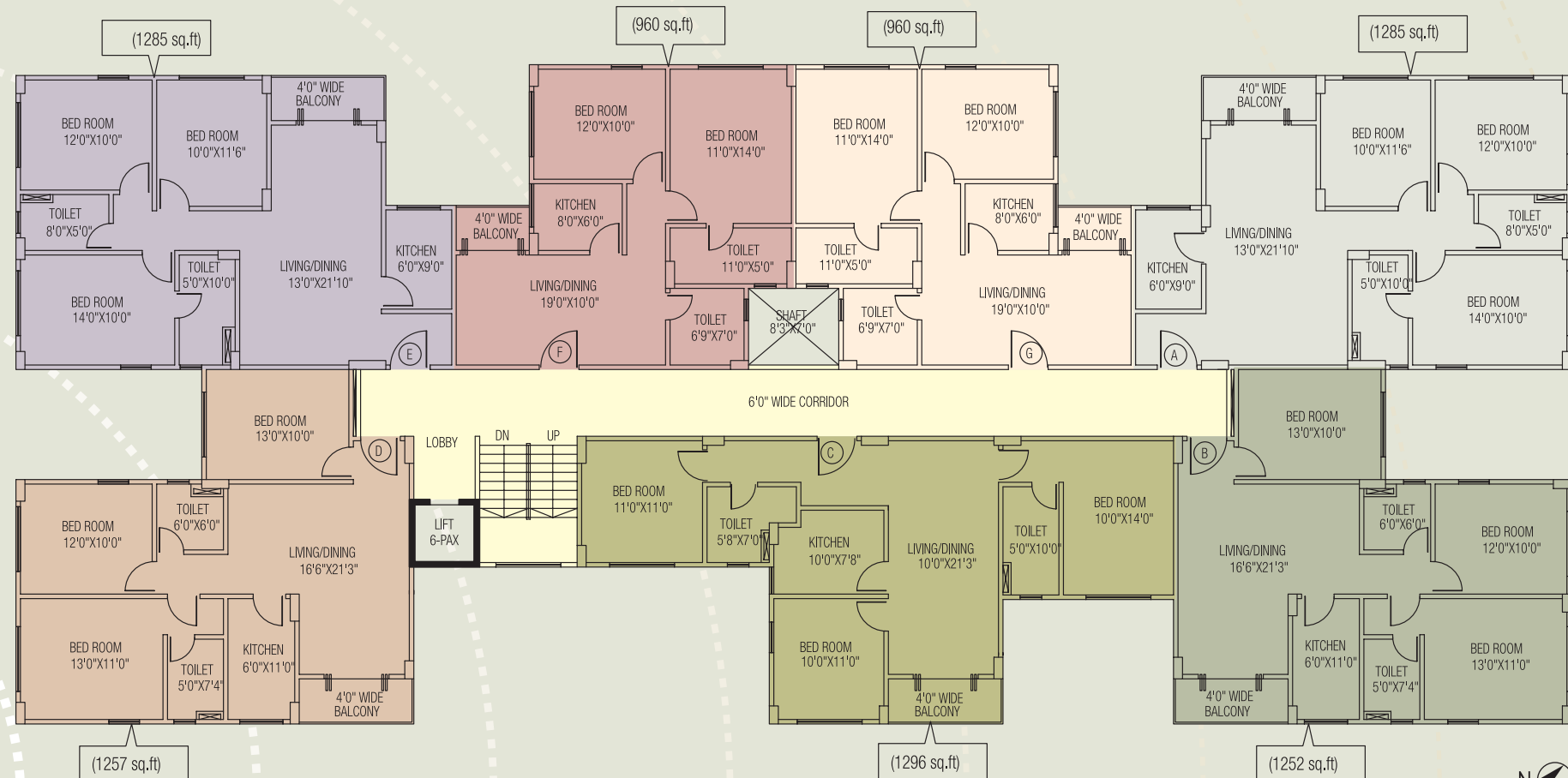
TYPE	FLAT
3 BHK	A, B, C, D & F
2 BHK	E



Block 8 - NEPTUNE

Floor Plan

TYPE	FLAT
3 BHK	A, B, C, D & E
2 BHK	F & G

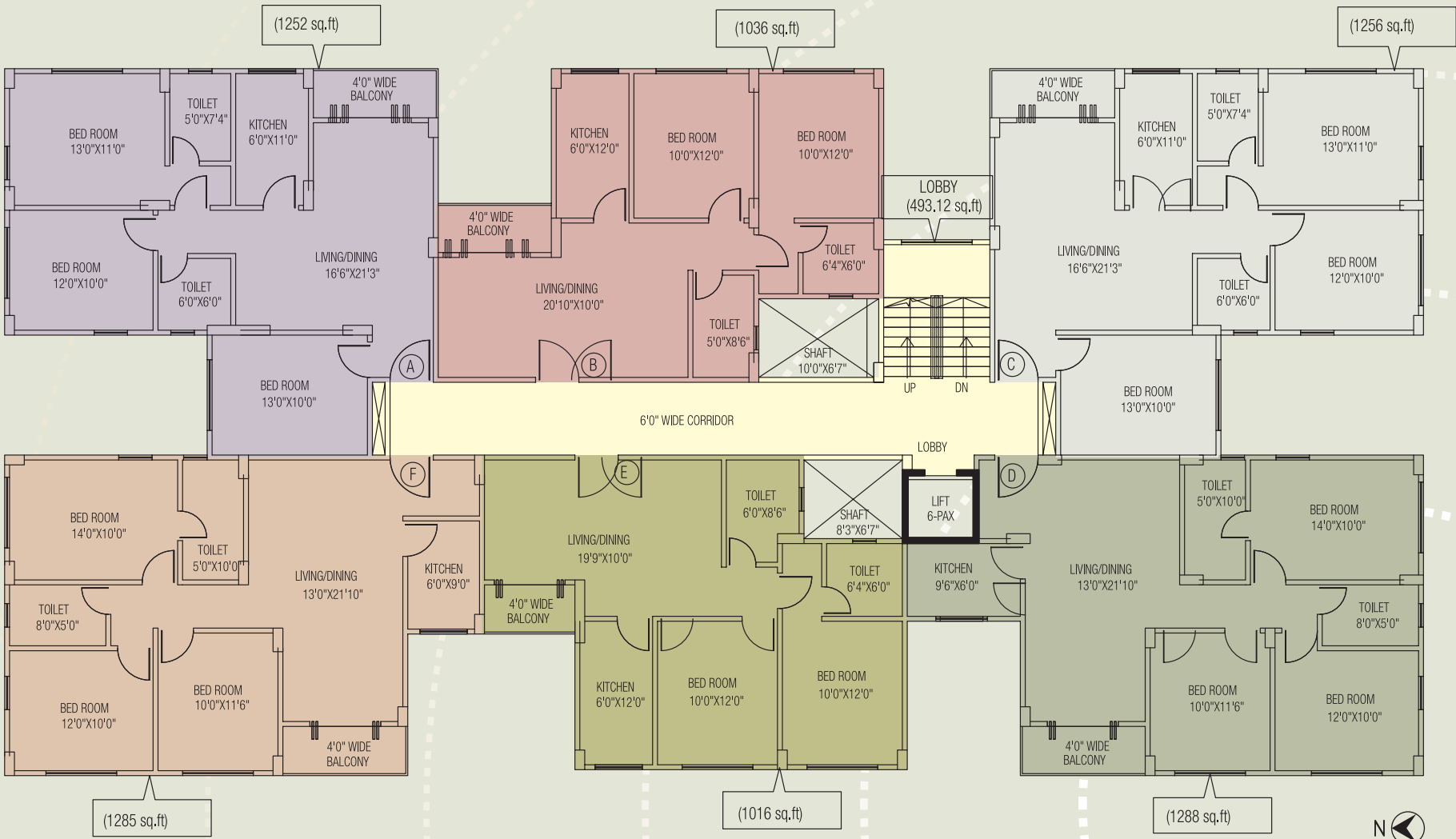




Block 9 - PLUTO

Floor Plan

TYPE	FLAT
3 BHK	A, C, D & F
2 BHK	B & E



Block 10 - ERIS

Floor Plan

TYPE	FLAT
3 BHK	A
2 BHK	B, C, D, E & F

